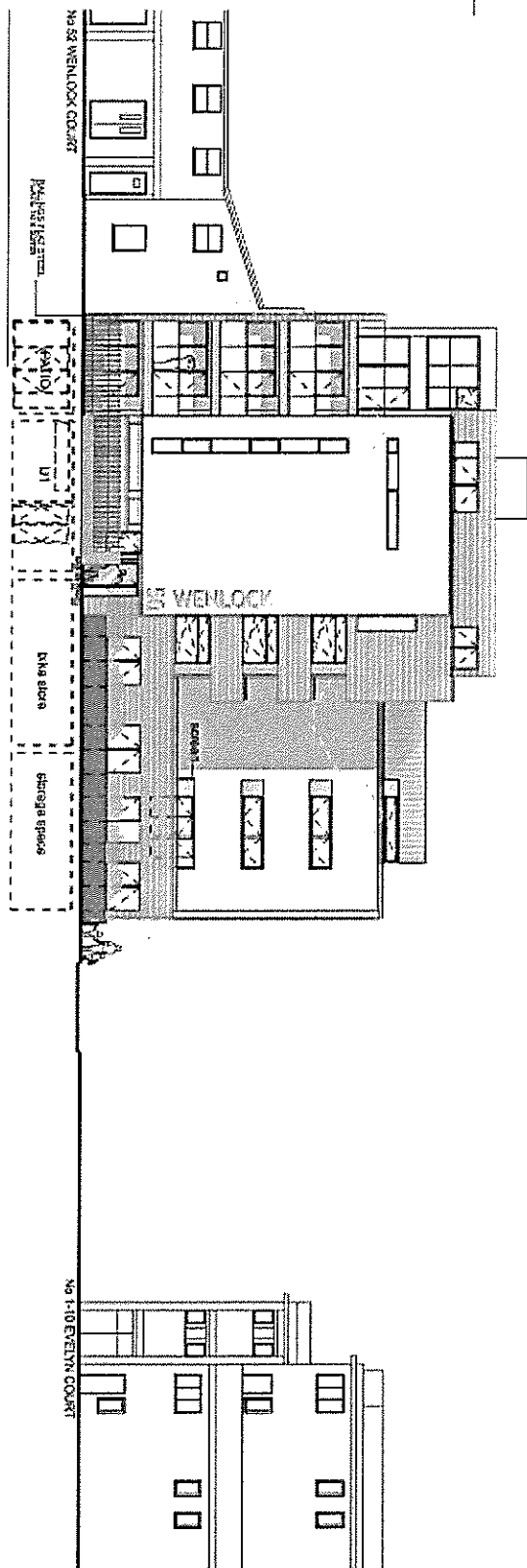
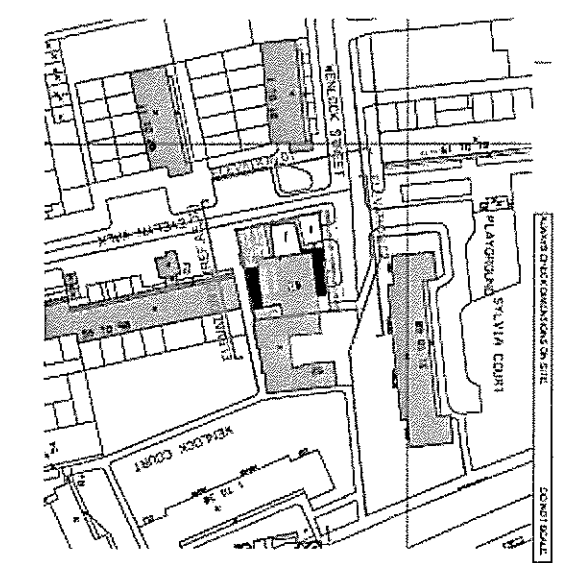
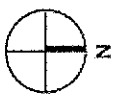


PROPOSED ELEVATION 01 - WEST - EVELYN WALK



PROPOSED ELEVATION 02 - NORTH - WENLOCK STREET

- MATERIALS LEGEND**
- WHITE RENDER
  - HORIZONTAL TIMBER CLADDING
  - VERTICAL TIMBER CLADDING
  - BRICK - LONDON STOCK  
(includes front reinforced building)
  - OPSOUL GLASS
  - CLEAR GLASS
  - ANODISED METAL PANEL - GUNNAGE
  - ZINC CLADDING PANELS CHARCOAL GREY BY WONG OR SIMILAR
  - GREY ALUMINIUM WINDOW FRAME
  - FIBRE FORM CONCRETE FINISHED DARK GREY



REV. E 13.10.2008 - ALTERATIONS TO PLASTER, PAINTING FENCE AND GROUND FLOOR ELEVATION  
 REV. D 02.10.2008 - ALTERATIONS TO PLASTER, PAINTING FENCE AND GROUND FLOOR ELEVATION  
 REV. C 02.10.2008 - ALTERATIONS TO GROUND FLOOR AT ELEVATION 01  
 REV. B 18.05.2008 - PLASTER HEIGHT REDUCED, PAINTING FENCE ADDED  
 REV. A 21.05.2008 - REFERRED TO PLANNING COMMENTS

**GML Architects**  
 40 Frosterley Street  
 London EC1V 6BE  
 Tel: 020 7400 4369  
 Fax: 020 7400 4064  
 info@gmlarchitects.co.uk

30 WENLOCK STREET  
 HACKNEY  
 LONDON, N1  
 MARCH 2008  
 130802A3  
 131002A4

PROPOSED ELEVATION + MATERIALS SHEET 3246 / P+8 E

